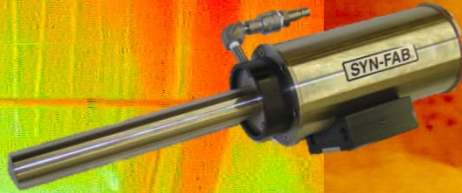


# HOT SHEET

## SF12MP HIGH TEMPERATURE IMAGING SYSTEM



SYN-FAB® SF12MP • THE MOST ADVANCED INFRARED IMAGING SYSTEM

The **SYN-FAB®** SF12MP series imaging system represents the state-of-the-art in high temperature process monitoring. Each system utilizes a high-tech combination of electronics, optics and protection to produce high quality, reliable video and temperature data of your process. The SF12MP's optical system is optimized for imaging in the mid-wave infrared spectrum to see through the smoke, ash and haze produced within even the most volatile boilers and furnaces.

### SF12MP - SYSTEM FEATURES

► Quick-change system design for easy installation and maintenance ► Proprietary **Bright Image Optical System** for sharp images ► Modular configuration for easy option add-ons and upgrades ► Compact, easy to handle design ► Indestructible **STEELON™** housings to protect electronic components ► Advanced lens design for low air consumption, wider field of view and easy assembly/disassembly ► High performance, ruggedized imagers for increased durability ► Loaner systems and 24 hour service for emergencies

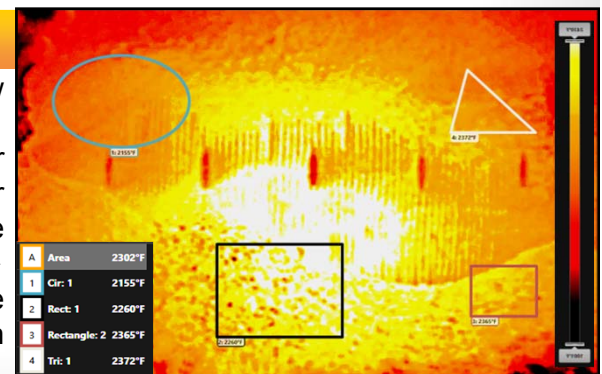
### SF12MP - SYSTEM OPTIONS

► **Pyro-Viper™-HD** image processing and analysis software for temperature measurement, image processing and data management ► Balanced draft and positive pressure wall boxes for permanent/semi-permanent installation ► Lens lengths available from 12" to 65" with straight ahead, right angle or 45° obtuse line of sight ► Automatic retract assemblies ► Portable system configuration and cart assembly for diagnostics and testing ► Air filtration systems ► Digital recorders, monitors, switchers and other video equipment ► Fiber optic, coax, Ethernet, or wireless video/data transmission ► Custom options for special needs

### SF12MP - BENEFITS TO OPERATORS

► Helps maximize efficiency and capacity by showing fuel and air flow in the burning zone ► Reduced emissions by improving performance ► Increased safety margins by helping detect tube leaks and other problems before major damage occurs ► Helps reduce slag, clinker and ash build-up resulting in fewer shutdowns and lower maintenance cost ► Aiding start-ups and troubleshooting burner malfunctions ► Helps in shaping and positioning fuel beds ► Provides temperature data and thermal profile of fuel bed and wall tubes when used with **Pyro-Viper™-HD** software

**SYN-FAB® INC.**



Pyro-Viper™-HD SOFTWARE DISPLAY

### HIGH TEMPERATURE & INDUSTRIAL PROCESS MONITORING SYSTEMS

7863 Schillinger Park Road • Mobile, Alabama • 36608 • USA  
Phone +1 251-633-4942 • Fax +1 251-633-2514



[www.synfab.com](http://www.synfab.com)

